



VARIABLE SPEED TYPE  
HYDRO PNEUMATIC SYSTEM

(Only 1VFD common for all pumps)

SMPC-F

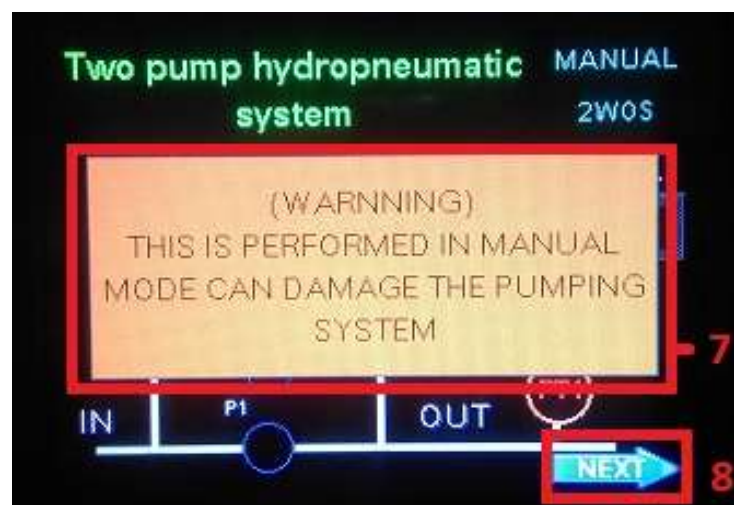
TOUCH SCREEN HMISCU

## INTRODUCTION

### # Main screen



- 1 – Monitor **Actual** Value.
- 2 – Monitor **working Mode** of operation.
- 3 – Monitor **Set Point** value.
- 4 – To show **Pump1** status, when pump 1 will be on then it will get changed into the blinking state.
- 5 – To show **Pump2** status, when pump 2 will be on then it will get changed into the blinking state.
- 6 – To show **Pressure Transmitter** status.

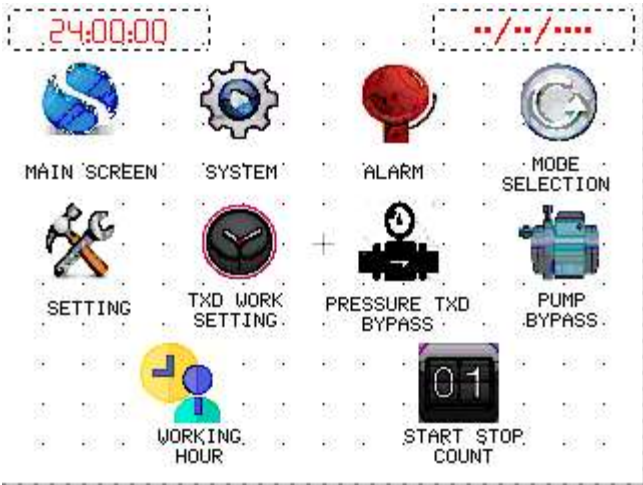


- 7 – When there is present any kind of fault then message will shows a fault definition.
- 8 – To move next screen.

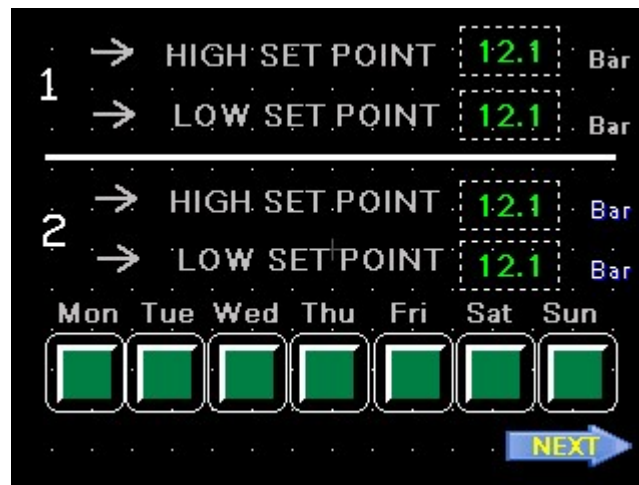
# Starting window:



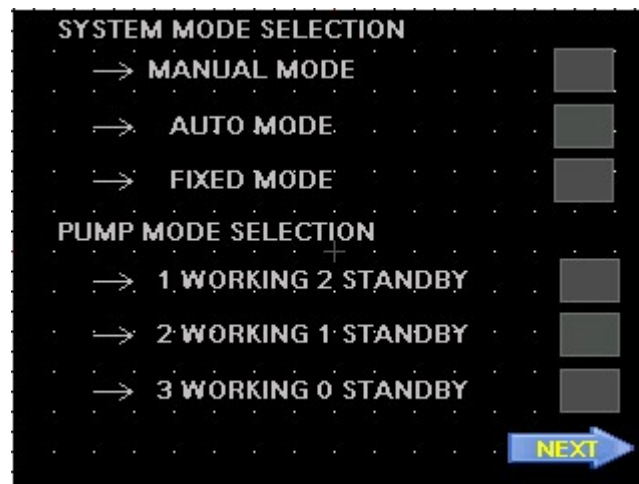
# Menu window:



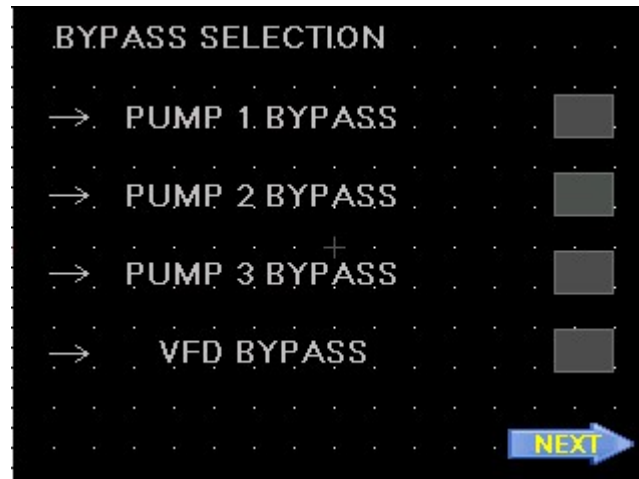
# Setting window: we can adjust here lower set point value and higher set point value and also create schedule for particular day at particular time.



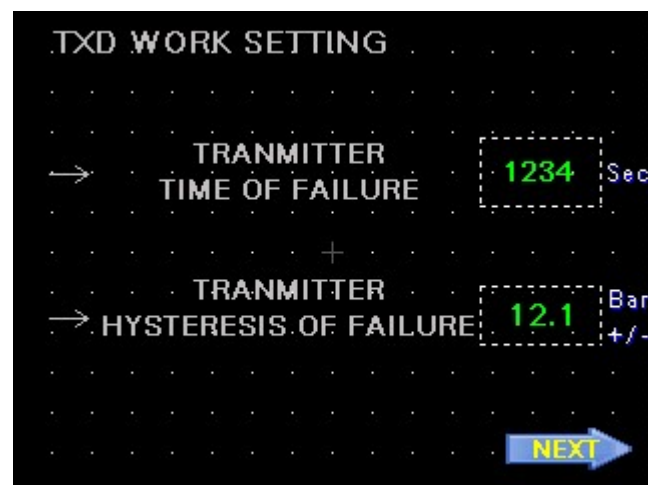
# Working mode window: Here we can select system mode and pump mode.



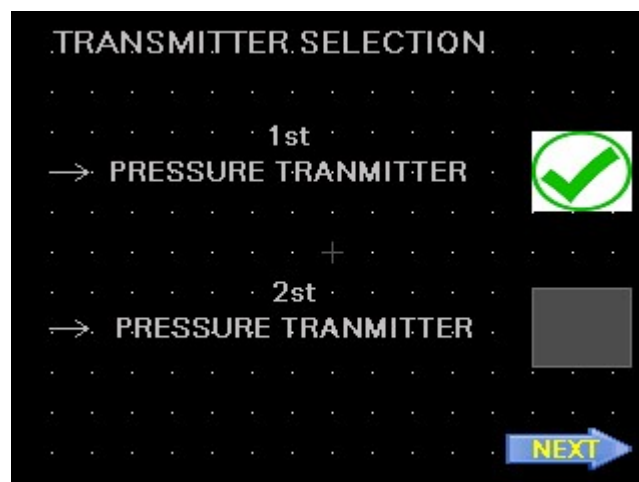
# Pump bypass selection: In this window we can bypass the pumps as well as VFD.



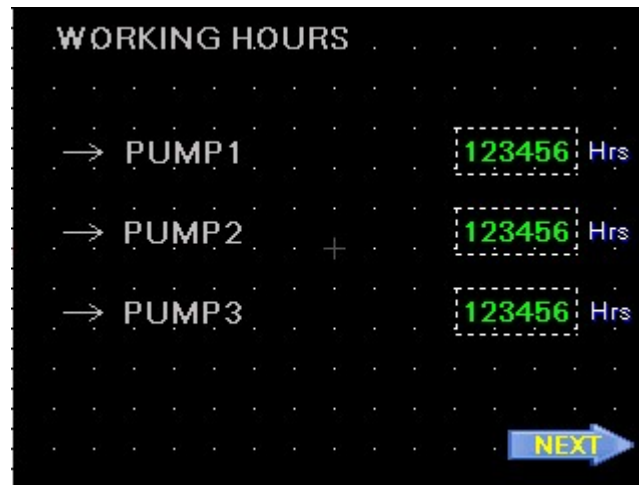
# TXD working setting: In this window we can define dry run protection, adjust transmitter failure time (Sec) and cut off pressure (bar).



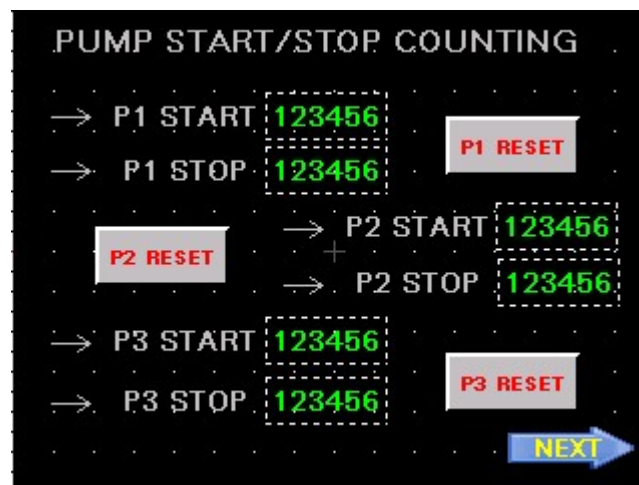
# Transmitter selection: In this window we can select pressure transmitter.



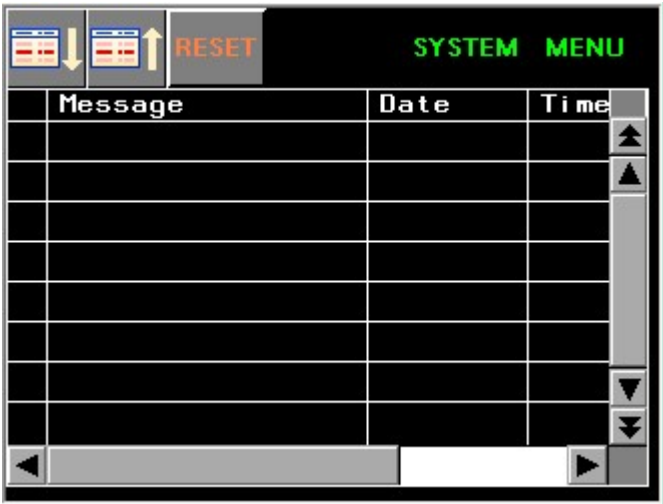
# Pump working hour: This window shows a working hour of all pumps.



# Pump start/stop counting: This window shows a start/stop counting of all pumps.



# Alarm window: In this window we can check generated fault.



## PARAMETER SETTING

- 1) Firstly we have to set all suitable process parameters.
- 2) Press enter icon to move next screen.



- 3) After that alarm window will get appear.



- 4) Then click on **MENU**, as shown in below:



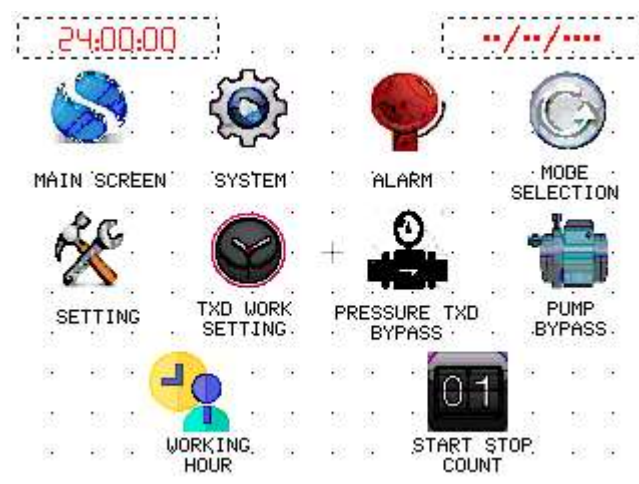


5) After pressing the menu button, the password window will be appear, as shown below:

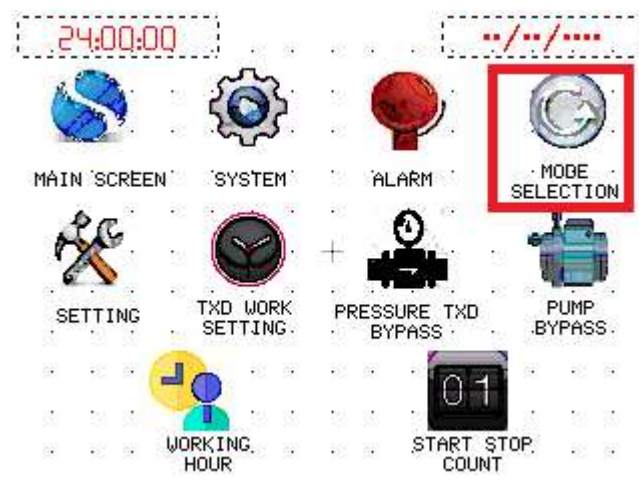


6) Enter the password **1195**.

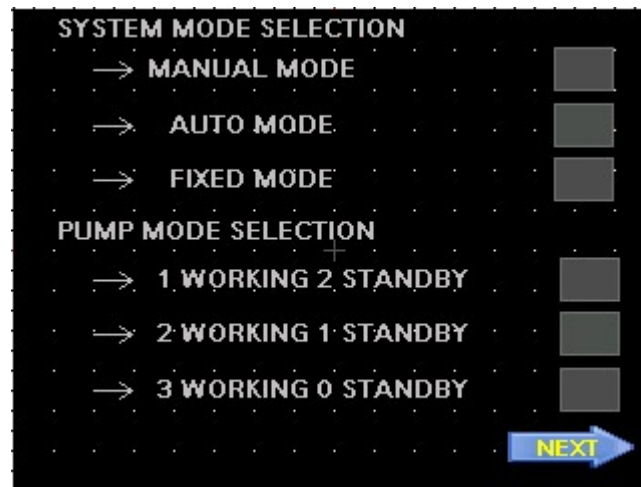
7) If password entered correctly, then menu window will be open.



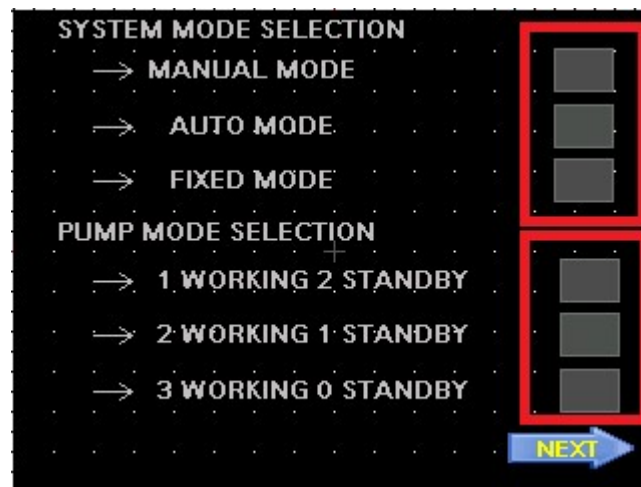
8) After entering the menu window, click on the **mode selection** icon.



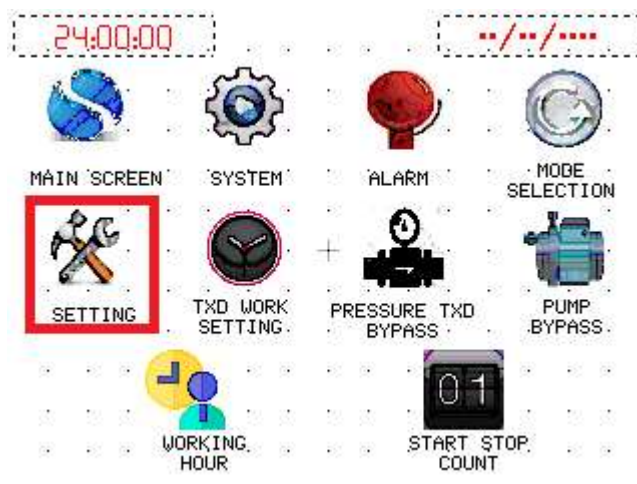
9) After that working mode window will get appear.



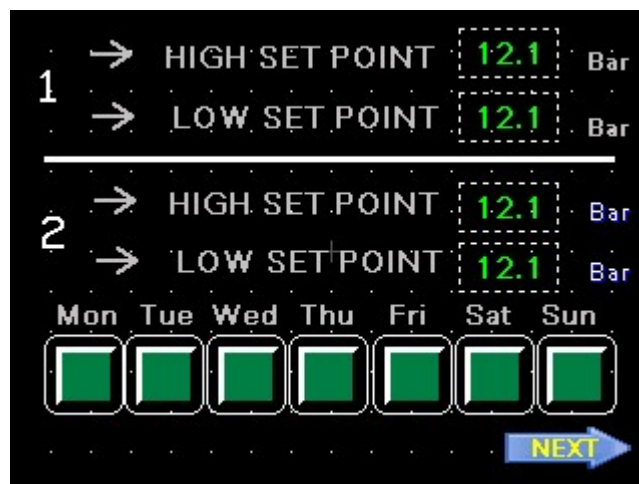
10) After that we have to select system mode and pump mode condition, if we want to select fixed mode then click on the fixed mode switch than automatically VFD will be bypass and alarm window will be show VFD bypass message , shown below:



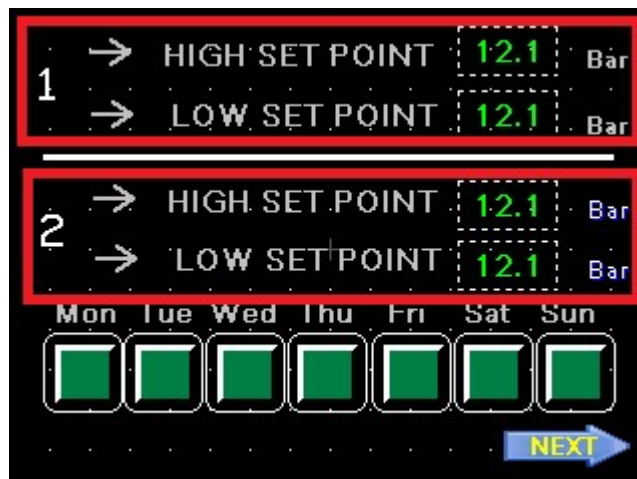
- 11) After setting the mode selection, back to the menu screen by click on the home icon.
- 12) After back to the menu window, click on the **setting** icon.



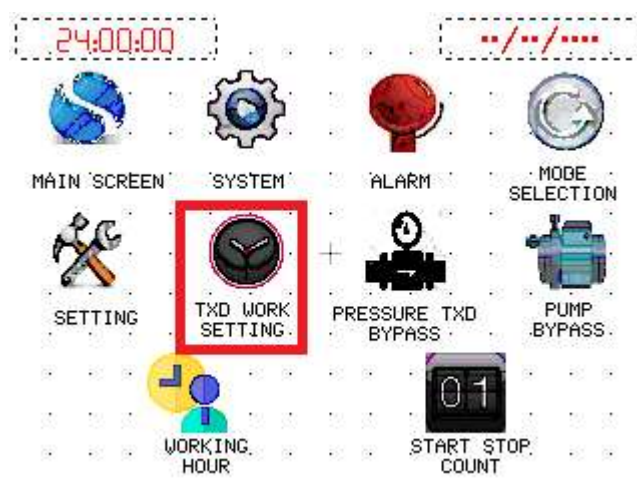
- 13) After that setting window will get appear.



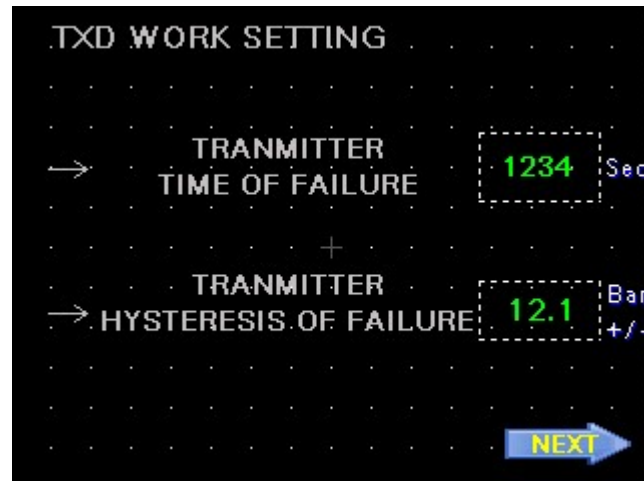
- 14) In this screen we can change **High set point** and **Low set point** and also we can schedule particular high/low set point for particular day with time, shown below:



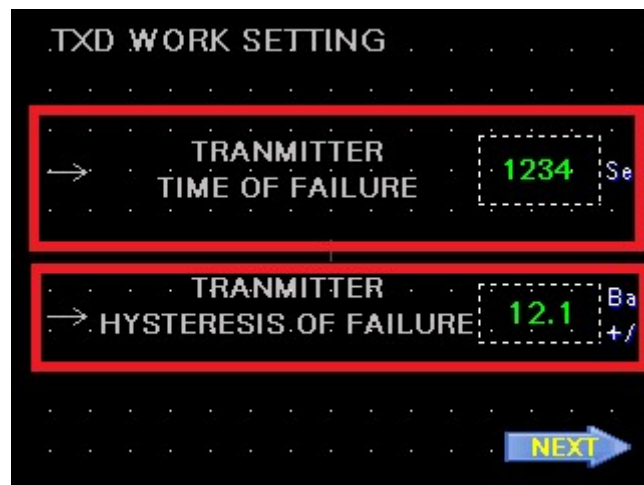
- 15) After above settings has been done, back to the menu screen by click on the home icon.
- 16) If menu window will get appear, then we have to set dry run protection condition, go to the **TXD work setting** by click on that icon, as shown below:



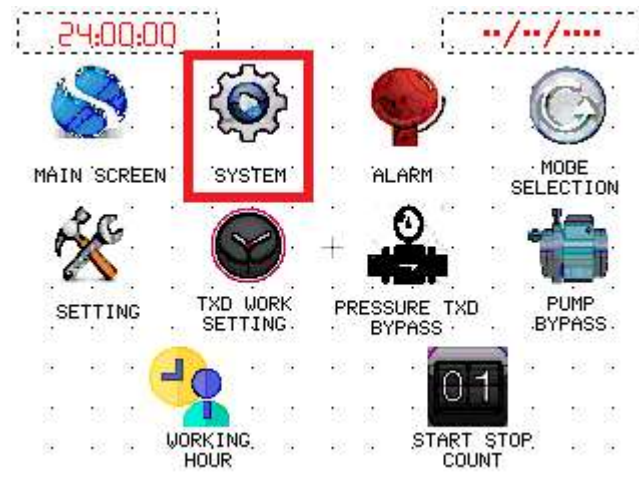
- 17) TXD working setting window will get appear.



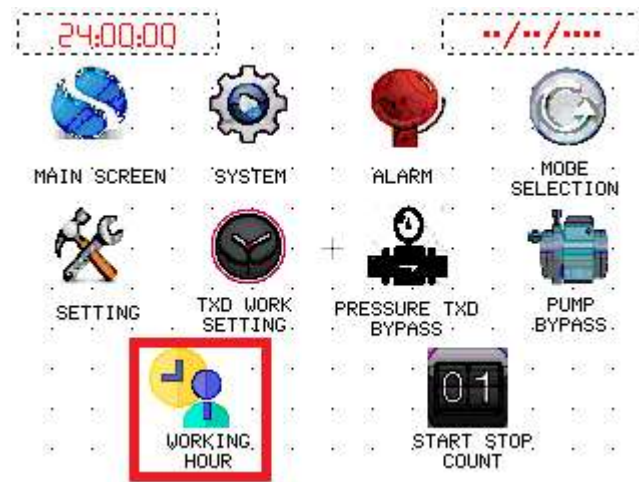
- 18) Set the transmitter failure time value, then set the transmitter cut off point value, as shown below:



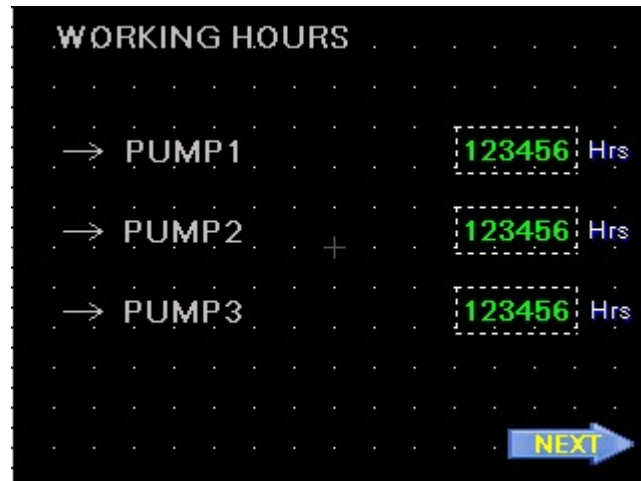
- 19) After set the above values, and then back to the menu window.  
20) After done all parameter setting, then back to the system screen by pressing on the system icon, as shown below:



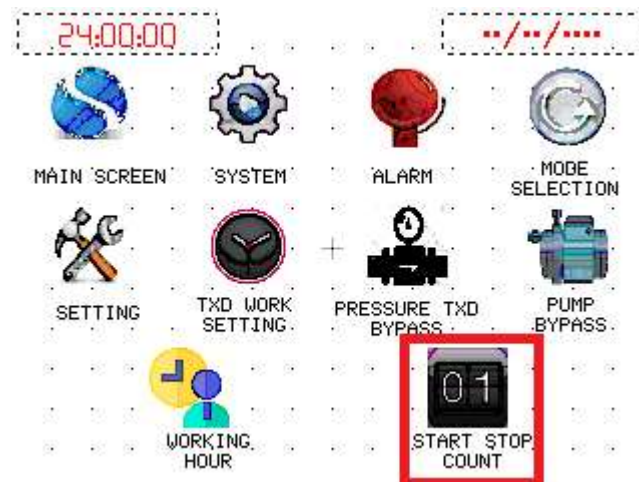
21) If we want to see pump running hours/minutes, then click on the working hour icon on the menu screen.



22) This window we can monitor the running time of all pump.



23) If we want to see pump start/stop count, then click on the start/stop count icon on the menu screen.



24) This window we can monitor the how many times of all pump start and stop, if we want to reset the start/stop count then press RST button for 5sec to reset the pumps counting.



