



NANDI UNIVERSAL DRIVE

Leading a New Start



SUPPORTS WIDE
VARIETY OF MOTORS



MOBILE APP
CONTROL



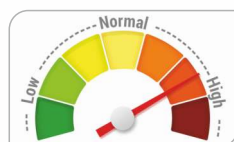
DUST-PROOF & RAIN-PROOF
IP 65* DESIGN



INDEPENDENT DATA
LOGGING FACILITY



POWERED WITH REMOTE
MONITORING SYSTEM



WIDE
TEMPERATURE RANGE



GRAPHICAL LCD FOR
EASY OPERATION



Shakti's Nandi Universal Drive is a unique product designed, developed and manufactured in India. This drive makes it possible to run solar and industrial motor pump sets. It supports wide varieties of motors by virtue of its universal design. It's IP 65* design and rust-proof metallic enclosure provides protection from foreign particles (e.g. rain, dust, oil) which obsoletes the need for extra outer case.



Suitable for HVAC System



Suitable for Conveyor Belt



Suitable for Industrial Fan



Suitable for Solar Pump

APPLICATION

All in one solution for driving of various motors like AC-IM, PMSM, IPMSM, S4RM, etc.

TECHNICAL SPECIFICATION

Product	Nandi Universal Drive				Nandi VH Drive
Model No.	960000073	960000066	960000067	960000068	9600000106
Power	15 HP	20 HP	25 HP	35 HP	upto 75 HP
Input(DC)					
Nominal DC Voltage	600V				
MPPT Voltage Range	300-720V				
Max. DC Input Current	30A	40A	50A	70A	120A
Max. Power at DC Side	15000W	20000W	25000W	35000W	75000W
No. of MPPT	1				
Input(AC)					
AC Voltage Range	300-460VAC				
Frequency Range	45-65 Hz				
Output(AC)					
Nominal AC Voltage range	0-460 VAC				
Frequency	0-200 Hz				
Rated AC Current	25A	38A	50A	65A	120A
Max AC current	27A	42A	55A	70A	125A
Max Power at AC side	15000W	20000W	25000W	35000W	70000W
Power Factor Range	0.75 - 1				
Connection Phases	3 phase only				
Efficiency					
Max Efficiency	> 96%				
MPPT Efficiency	>99%				
General Data					
Protection	Short Circuit Protection, Surge Protection, Over Temperature, Over Current, Over Voltage, Under Voltage, Dry Run, Ingress Protection				
Ingress Protection	IP65			IP20	
Operating Temperature Range	-20C to 70C (45 to 70 with derating)				
Dimensions (L*W*H)	425 mm x 255 mm x 220 mm (30Amp)	475 mm x 295 mm x 240 mm(40-70Amp)	530 mm x 340 mm x 250 mm(120Amp)		
Net Weight	11Kg (30Amp)	20Kg (40-7Amp)		32Kg (120Amp)	

*As per the specification table

WHY TO CHOOSE SHAKTI'S NANDI UNIVERSAL DRIVE

OTHER DRIVES	NANDI UNIVERSAL DRIVE
Relatively difficult installation & operation	Simple installation & operation with graphical LCD
IP 20	IP 65 (Protection from dust and rain)
Remote Monitoring System (RMS) not available	Remote Monitoring System (RMS) inbuilt
Independent Data Logging Facility not available	Independent Data Logging Facility available
Mobile Application Facility not available	Mobile Application Facility available

India : Toll Free No. 1800 103 5555

Other Countries : +91-7292 410500

SHAKTI PUMPS (INDIA) LIMITED

Sector - 3, Pithampur - 454774, Dist. - Dhar, (M.P.) - INDIA.
Tel.: +91-7292 410500, E-mail: info@shaktipumps.com,
Web: www.shaktipumps.com



Authorised Dealer / Distributer

SAP No. : 2000018783

VC : 2344

May/2021-22/L3/0000

06 May / 2022/RO